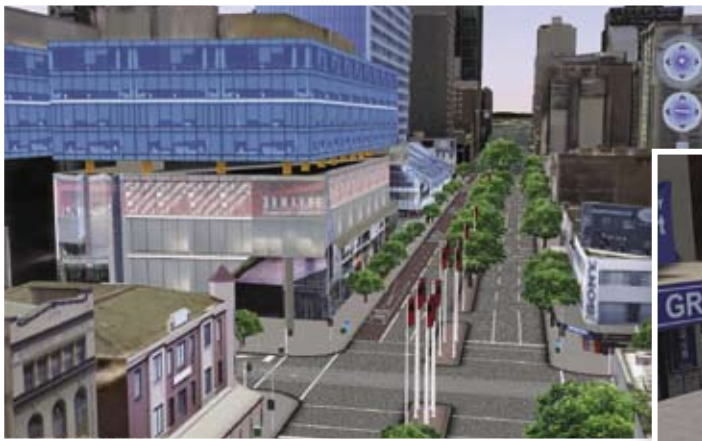


3D Modelling and Simulation



www.aamgroup.com | info@aamgroup.com

AAM's K2Vi is an interactive, 3D visualisation and virtual reality tool. K2Vi puts the real world at your finger tips for applications including urban and regional planning, asset management, transport planning, event management as well as security and situational awareness.

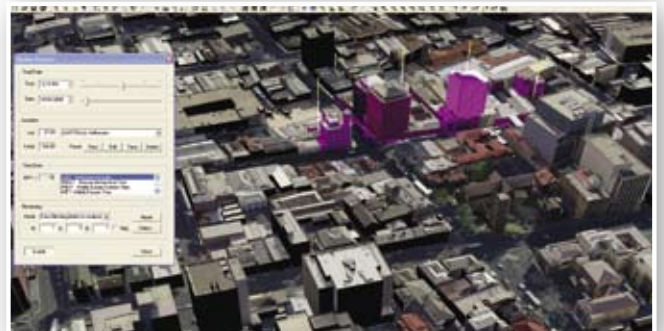


AAM's high resolution city models are easily deployed and updated within K2Vi.



K2Vi is widely used in Local Government for applications including town planning, asset management and engineering. K2Vi links seamlessly with major GIS systems to effectively become a fully 3D GIS tool.

K2Vi is the perfect tool for planning new buildings and developments. K2Vi supports real time shadow analysis, line of sight calculations and interactive placement and sizing of proposed buildings and developments.



Visit our Website for Video Demonstrations

3D Modelling and Simulation



www.aamgroup.com | info@aamgroup.com

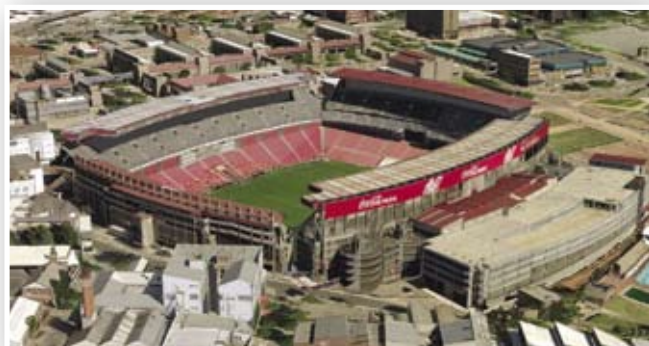


K2Vi provides powerful yet easy to use tools for analyzing proposed transport networks or modelling existing systems.



K2Vi is a powerful tool for major event management and planning.

Land Use Zones can easily be overlaid onto K2Vi projects.



Johannesburg's Ellis Park Stadium will be used in the World Cup.

K2Vi provides seamless linkages with existing CAD and GIS systems, allowing for powerful visualisation and analysis in a fully 3D environment.