

Engineering, Infrastructure and Utilities



www.aamgroup.com | info@aamgroup.com

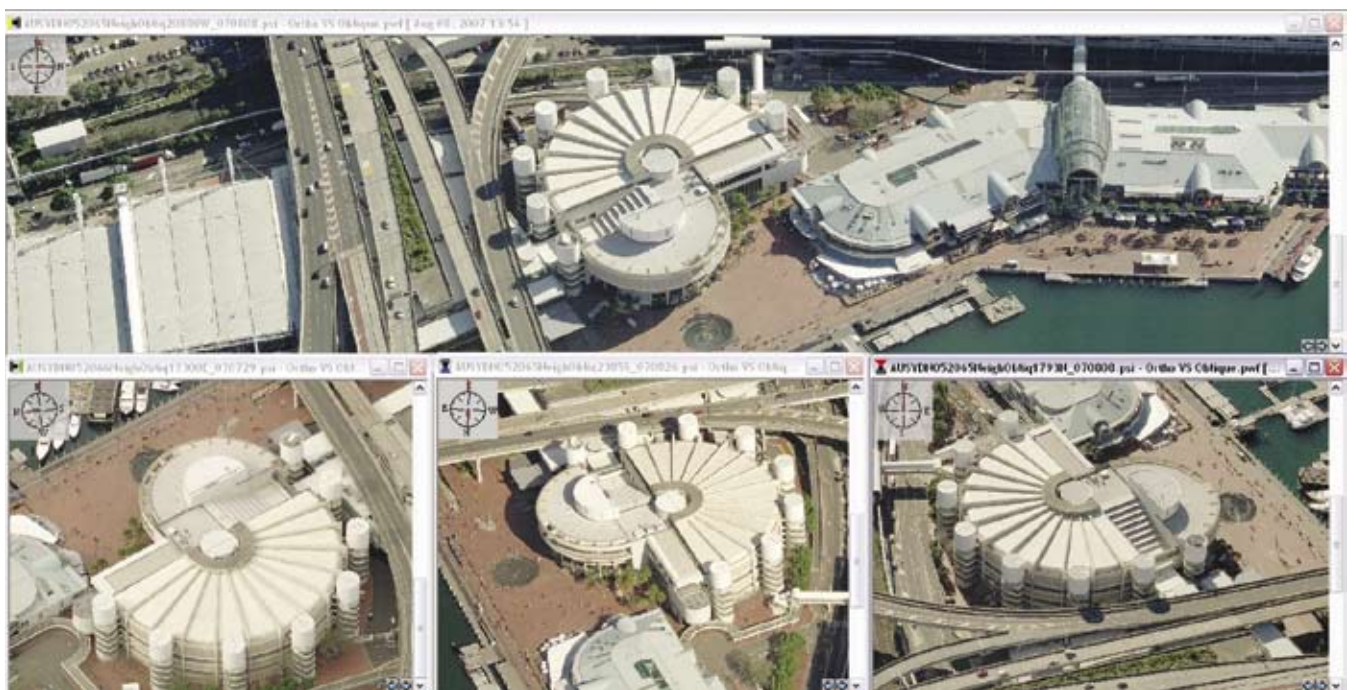
Whether you work in a major city area or in a rural setting, the ability to know every square metre of your area and location of assets is vital for future community planning and development. Now you can have instant access to high-resolution images that allow you to save time and money by visually inspecting and measuring buildings, roads and utility assets – without ever leaving your office.

Introducing Pictometry® – a revolutionary information system that lets you see up to 20 different views in your area. With only minutes of training you can find, view, or analyse any building, road, intersection, power line, or other feature.

Whether you're planning for a new highway, reviewing potential water main installations, or need to inspect sites for repairing utilities services, Pictometry provides your organisation with an easy-to-use solution that presents visual information of your facilities in stunning clarity. Unlike traditional straight down aerial imaging (orthogonal views), over 80% of Pictometry's high-resolution images are digitally captured from an angle (obliques), presenting the visual information as you are used to seeing it.

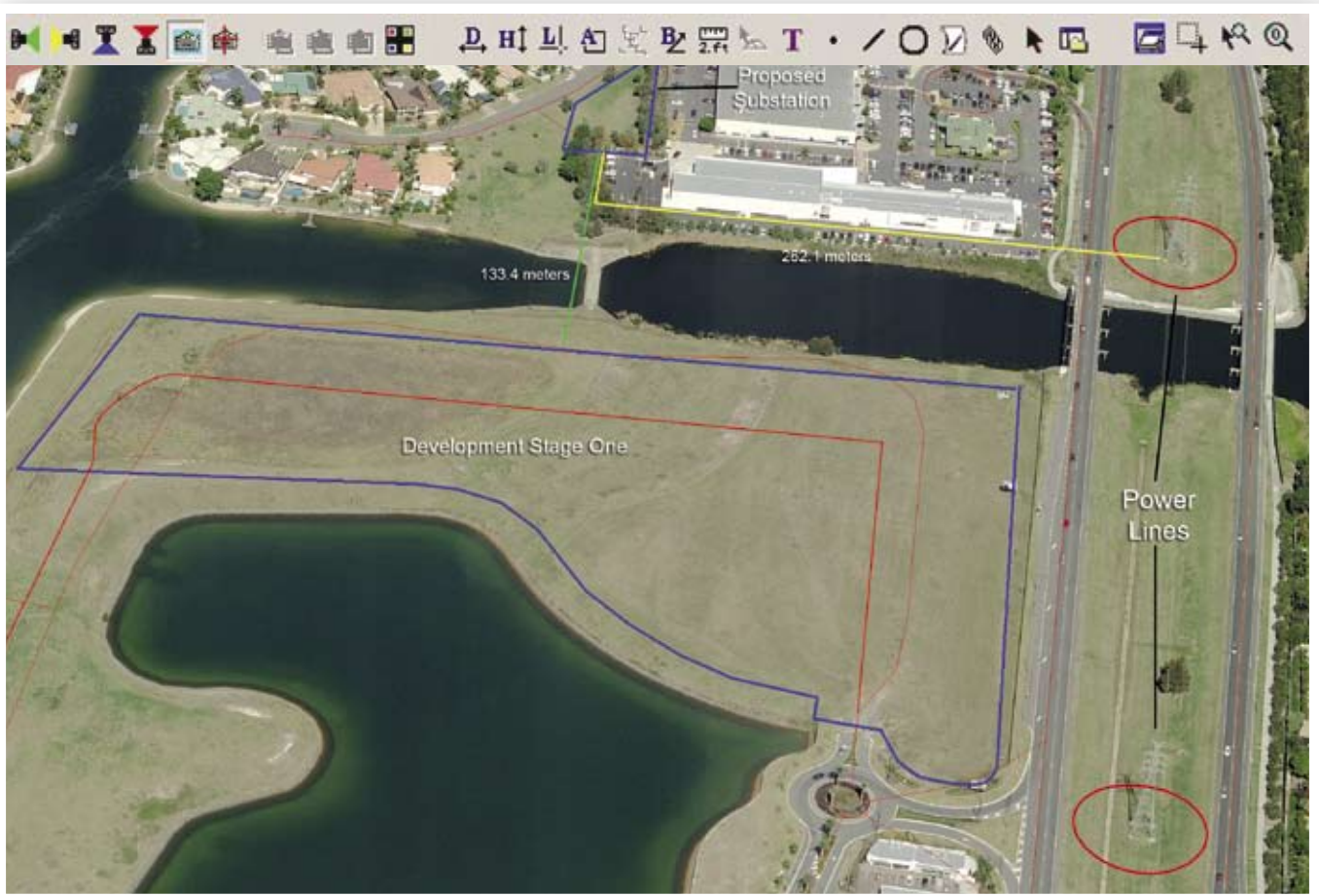
KEY APPLICATIONS

- Review properties for planning rights of way and easements
- Measure areas, length, height and width of any structure or building
- View adjoining properties for potential encroachments
- Prepare preliminary engineering designs, feasibility studies and presentations
- Inspect and preplan new developments or maintenance before sending out crews
- Integrate existing GIS data with oblique, high-resolution, aerial images from Pictometry
- Highlight and coordinate roadway construction sites, schedules and progress with drawing tools
- Preplan for emergency responses and share with public safety departments
- View substations and facilities
- Provide imagery to support environmental impact studies
- Support Dial Before You Dig Services



4 of the 20 views available with Pictometry

Visit our Website for Video Demonstrations



Using Pictometry for planning and development

FEATURES	BENEFITS
Oblique aerial images of your entire area	Enables instant viewing of every building, property, facility and road in your district from your desktop
Multiple images per location	Provides up to 20 views for planning roadwork, sending out utility crews, examining rights of way, and visually analysing hard to see areas
Overlay data directly on images	Documents and annotates important attributes of structures and/or properties for instant recall and decision making
Interactive software with measurement tools	Measures area, heights, lengths, widths, distances, angles and elevations of buildings, structures and roads without having to send out field teams
High-resolution daytime images	Illuminates any area by turning night into day, providing response crews with detailed visual information that might not be visible at night or from straight down (orthogonal) photos
Open architecture	Leverages existing investments in third-party information systems, such as GIS, for a complete end-to-end solution
Intuitive user interface	Shortens learning curve – anyone can quickly learn to run the system
Renewable image libraries	Maintains accurate, up-to-date images on all properties, roads, and new developments